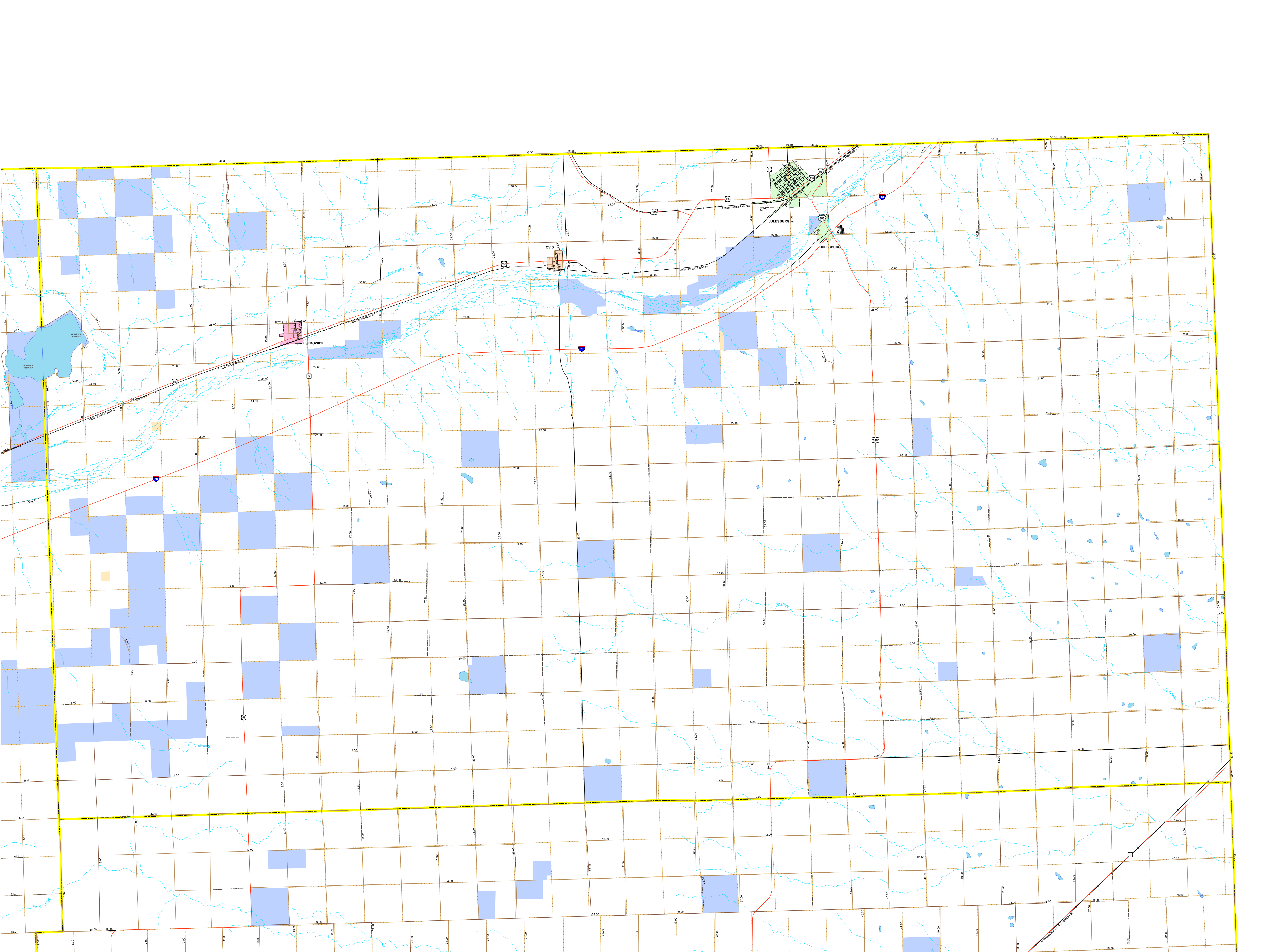


Sedgwick County



Legend			
Highways	Railroads	Lakes	Wilderness Area/Wildlife Area
Paved	Rivers/Streams	Public Lands - Bureau of Land Management	National Parks
Bladed	City Limits (various colors)	State Lands	Indian Reservations
Gravel	County Lines	Forests and Parks	Military Bases
Congested	Township Lines (PLSS)		



The information contained in this map is based on the most currently available data and has been checked for accuracy. CDOT does not guarantee the accuracy of any information presented, is not liable in any respect for any errors, or omissions and is not responsible for determining "fitness for use". Source of landowner data is COMaP v7. This map does not imply permission of public access. Produced 8/28/2009